

timetable

| | May 21 (Friday) | 22 (Saturday) | 23 (Sunday) |
|-------|--|---|---|
| 9:00 | | | |
| 10:00 | 10:00-10:45 Opening | 10:00-12:30 session1 Art & Creativity | 10:00-12:00 session4 Diversity Session (Citizen Session) |
| 11:00 | 11:00-12:00 Keynote Speech Kai-Uwe Bergmann | | |
| 12:00 | | | |
| 13:00 | 13:15-15:15 Opening Discussion 1 Waterfront Cosmology: Art, Consciousness, and the Future | 13:15-15:45 session2 Urban Strategy Starting from Waterfront | 13:00-15:00 session5 Archie Session |
| 14:00 | | | Declaration drafting committee |
| 15:00 | | | 15:00-16:00 Director and Declaration |
| 16:00 | 15:45-17:45 Opening Discussion 2 JAPIC Symposium: Nakagawa Canal Waterfront Area Revitalization Project | 16:00-18:30 session3 Waterfront Management Supported by Citizens and Businesses | |
| 17:00 | | | |
| 18:00 | | | |
| 19:00 | | | |



2021 5.21 FRI. - 23 SUN.

Program English version

All events will be held online.

Main Program

A variety of guests will talk about the world's and Japan's waterfront.

May 21 (Friday)

●Opening Remarks

Kazushige Endo

Director, United Nations Center for Regional Development



Kazushige Endo, Director of the United Nations Center for Regional Development (UNCRD), graduated from Kyoto University in 1988 with a B.S. in Engineering and an M.S. in Regional Planning from the University of Nebraska, USA. He has been in his current position since August 2018.

Time → 10:00–10:15

Simultaneous interpretation → Japanese/English

●Opening Remarks

About the ICF NAGOYA2020

Eizo Hideshima

Chairman of the Planning Committee,
Professor, Graduate School, Nagoya Institute of Technology



Time → 10:15–10:45

Simultaneous interpretation → Japanese/English

●Keynote Speech

Kai-Uwe Bergmann, Partner, BIG (BJARKE INGELS GROUP)



KAI-UWE BERGMANN

Kai Uwe Bergmann is a partner (co-owner) of BIG. He is a Fellow of the American Institute of Architects (FAIA) and has developed BIG's business areas around the world, including North America, Europe, Asia and the Middle East. He also oversees urban planning projects and landscapes. Recently, he has been in charge of the BIG-U project in Manhattan, NY. Construction of the first phase of this project (approximately 4km) is scheduled to begin in 2020. He has also overseen a number of projects

including Brooklyn Queens Park, the Smithsonian Master Plan, and Miami Beach Square.

●BIG - BJARKE INGELS GROUP

is a group of architects, designers, urban planners, product designers, and researchers that began in Copenhagen in 2005 and is currently based in New York, London, and Barcelona. They have been working on cutting-edge projects around the world. The group is also in charge of urban design for Woven City, a Toyota Group project under construction in Shizuoka Prefecture.

About the Keynote Speech → Touching on the various projects of BIG, a global architectural design firm, he introduced the forefront of waterfront design, including its ambitious design and workshops with residents on the BIG-U project in Manhattan, NY. He will also share hints from New York on the Nagoya Model, a major theme of the International Canal Forum NAGOYA2020.

Time → 11:00–12:00

Simultaneous interpretation → Japanese/English

May 21 (Friday)

●Opening Discussion 1

Waterfront Cosmology: Art, Consciousness, and the Future

The world is changing dramatically due to the Corona disaster. The time has come for each of us to face the essence of abundance and well-being, and to seriously confront the transformation of our consciousness. At the dawn of this new reality, what is the role of the urban waterfront? What is the true metamorphosis of the urban waterfront that will emerge after the trials and tribulations, rather than the regeneration of the waterfront to focus on specific functions of the city, to prepare the physical infrastructure, and to create an economy and culture for the masses? When we look at the history of the waterfront from the perspective of human mental formation, the keywords creativity and art come to mind.

What is the future of the waterfront that will be opened up by art when the waterfront and art play a new role in the city and our consciousness expands toward the universe?



Hidenobu Jinnai

Architectural historian
Specially Appointed Professor,
Hosei University



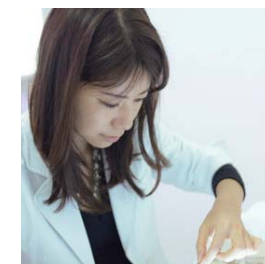
Mitsuyo Hattori

Spatial designer
Akashic leader
Representative of like air + water co. ltd.



Yukiko Shikata

Curator



Yoko Shimizu

Artist Scientist

Time → 13:15–15:15

Simultaneous interpretation → Japanese/English

May 21 (Friday)

●Opening Discussion 2 JAPIC Symposium: Nakagawa Canal Waterfront Area Revitalization Project

The Japan Project-Industry Council (JAPIC), a group of members from government, academia, and industry that proposes large-scale infrastructure projects, would like to propose a "Nakagawa Canal Revitalization Plan" that reflects new trends such as dealing with the recent corona disaster, climate change, and DX. Specifically, we would like to propose a plan for the coastal development of the Nakagawa Canal based on three basic principles: (1) a corridor of water and greenery, (2) an environment for work, residence, and play that combines the old and the new, and (3) a transportation environment that takes advantage of the geographical characteristics, in order to make the Nakagawa Canal a city of elegance and liveliness with a tranquil waterside space while forming a new axis from Nagoya Station to Nagoya Port. we would like to build momentum for the development of the Nakagawa Canal.

◎Issue 1



Yoshitsugu Hayashi
Professor, Chubu University

◎Issue 2



Kazuo Horiba
Vice Mayor of Nagoya City

◎Commentator



Naoki Matsuo
Professor Emeritus,
Chubu University

◎Coordinator

Takaya Fujimoto
Chairman, National Land and Future Project Study Group, JAPIC

◎Panelists

Satoshi Tojo
Director of Housing and Urban Department, Nagoya City

Hidetoshi Kawaguchi
Professor, Tokyo City University

Takahide Maruyama
Former Director, Minato Research Foundation

Takuya Ogawa
Managing Director and Executive Officer, Rinnai Corporation

Hiroshi Matsuda
Member, National Land and Future Project Study Group, JAPIC

Time → 15:45—17:45
Simultaneous interpretation → Japanese/English

The session will start with guests who will talk about advanced case studies from overseas and Japan.

May 22 (Saturday)

session 1 Art & Creativity

As seen in New York's Soho and Chelsea districts, the accumulation of artists is transforming the city. This session will discuss how to attract creative people to the waterfront, based on the initiatives of Linz, Austria and Yokohama.

Advanced Case Studies▶
Linz (Austria)
BankART1929 (Yokohama),
etc.

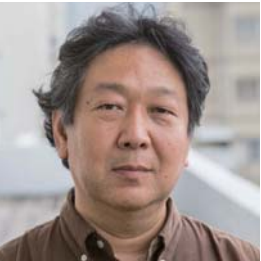
◎Chair **Osamu Tsukihashi**
Associate Professor, Graduate School of Kobe University

◎Vice Chair **Taro Igarashi**
Professor, Tohoku University Graduate School.

◎Speakers



Hideaki Ogawa
Co-Chair,
Ars Electronica Futurelab



Osamu Ikeda
President, NPO BankART1929



Norihiko Kuno
President,
Sanyu Consultants Inc.



Tom Heneghan
Architect, Former Professor,
Tokyo University of the Arts

Takanori Fukuoka
Associate Professor, Tokyo University of Agriculture

Tadashi Iwamoto
President, Waterside Research Institute, RaasDESIGN

Time → 10:00—12:30
Simultaneous interpretation → Japanese/English

May 22 (Saturday)

session2 Urban Strategy Starting from Waterfront

Many attractive cities in the world have attractive waterfront. How can we make the most of the waterfront in Nagoya, including the Nakagawa Canal? We will discuss future urban planning and urban strategies.

Advanced Case Studies▶
 Venice (Italy),
 Fugan Canal (Toyama Prefecture),
 etc.

©Chair **Shinichiro Nakamura**
 Associate Professor, Nagoya University Graduate School

©Vice-Chair **Nobuko Kawaguchi**
 Lecturer, Aichi Institute of Technology

©Speakers



Rinio Brutto-Messo
 Architect, Urban Designer
 Former Director of
 the Venice Water Metropolis
 International Center



Masaaki Hanyu
 Art House Oyabe Art Producer



Hideki Yamamoto
 Executive Officer,
 Nagoya Representative,
 Nikken Sekkei Ltd.



Akihiko Ohno
 Associate Professor,
 Graduate School,
 Nagoya City University



Katsuyuki Takenaka
 Professor,
 Aichi Prefectural University

Time → 13:15–15:45

Simultaneous interpretation → Japanese/English/Italian

May 22 (Saturday)

session3 Waterfront Management Supported by Citizens and Businesses

This session will discuss the best way to utilize the waterfront and sustainable waterfront management.

Advanced Case Studies▶
 Amsterdam, the Netherlands
 Tennoz Isle area (Tokyo), etc.

©Chair **Tadashi Iwamoto**
 President, Waterfront Research Institute, Inc.
 Representative Director, RaasDESIGN.

©Vice-Chair **Akito Murayama**
 Associate Professor, Graduate School, The University of Tokyo.

©Guest Speakers (from Amsterdam)



Yukiko Nezu
 President,
 Urbanberry Design



Sascha Glasl
 Urban Designer, Architect



Ron van Heusden
 Urban Designer

©Speaker



Sou Wadamoto
 Executive Director,
 Tennoz and Canalside
 Revitalization Association



Tatsuo Konaka
 Executive Officer,
 General Manager,
 Tamano Consultants Co.,Ltd.



Masashi Sawada
 Manager,
 General Affairs Department,
 Mizkan Group



Goro Uramoto
 Director,
 Mizkan Water Culture Center

Osamu Tsukihashi
 Associate Professor, Graduate School, Kobe University

Time → 16:00–18:30

Simultaneous interpretation → Japanese/English

May 23 (Sunday)

session4 Diversity Session (Citizen Session)

A variety of players involved in the waterfront will meet and frankly exchange opinions. To Our Canals: What Should We Do? We will discuss issues and dreams to take a new step forward after the various discussions at the International Canal Forum.

◎Plenary Director



Tomokazu Izawa
Professor, Nagoya Gakuin University

◎Main Facilitator



Norihide Imanaga
Associate Professor,
Nagoya Sangyo University

◎Group Facilitator

Hisayuki Inaba, Kayoko Hayashi, Yuko Mita

◎Technical Facilitator

Naoto Kamei, Shinji Kanda, Hiroshi Sumiya

◎Graphic Recorder

Dai Matsui, Yusuke Higo, Yu Aruga

◎Panelists

include local companies, citizens, NPO ,artists

Time → 10:00—12:00

May 23 (Sunday)

session5 Archie Session "Everyone's Canal

Takashi Yonezawa, an up-and-coming architect in Nagoya, will give a presentation on his proposal for "Everyone's Canal" based on various opinions from citizens. In addition, a panel discussion will be held with leading waterfront researchers and Nagoya's leading architects to discuss the "Nagoya Model" of the canal.

◎Presentation **Takashi Yonezawa**

◎Panel discussion



Takashi Yonezawa
Architect Takashi
Yonezawa Architect Office



Shin Murakami
Professor,
Sugiyama Jogakuen University



Yasuyuki Itoh
Architect,
Representative of
Coelacanth and Associates



Hidenobu Jinnai
Architectural historian
Specially Appointed Professor,
Hosei University

Time → 13:00—15:00

Simultaneous interpretation → Japanese/English

Declaration drafting committee | Discussion by planning committee members.

**Eizo Hideshima, Taro Igarashi, Tadashi Iwamot, Osamu Tsukihashi,
Shinichiro Nakamura, Takanori Fukuoka, Akito Maruyama**

Time → 13:00—15:00

Director and Declaration |

Nobuhiro Okuno
ICF-Forum Chairperson

Eizo Hideshima
ICF-Forum Chairman,Plannig committee

Time → 15:00—16:00

Simultaneous interpretation → Japanese/English